

Operation and Safety Instructions

Escalera StairCAT® Stair Climbing Hand Trucks and Forklifts



Brought to you by:



732.276.7164

Warranty

Escalera, Inc. warrants all hand trucks manufactured by them, when lubricated and operated as recommended, to be free from defect in material and workmanship for a period of one year after delivery. All warranty items are to be returned to Escalera, freight prepaid, for inspection. If the item is determined to be a defect, Escalera will repair or replace the item.

Alterations and/or careless or improper usage void this warranty. A nominal charge will be made for repair of units which are not operable for reasons other than defects in workmanship or material.

Guarantee

Escalera, Inc. guarantees their hand trucks with a two-month trial. If for any reason within the first 60 days of your purchase you are dissatisfied with your unit, you can return it to Escalera, freight prepaid, for a prompt exchange or refund of the entire purchase price with no restocking fee. To return any product, contact Escalera for a return authorization and packing instructions. For a full refund, all products must be returned in what Escalera considers to be reasonably new condition.

Contact

Escalera, Inc.
PO Box 1359
Yuba City, CA 95992

Phone: 800-622-1359
530-673-6318

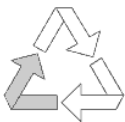
Fax: 530-673-6376

Email: info@escalera.com

Web Site: www.escalera.com

Please write down your model and serial numbers below for easy identification when calling Escalera, Inc.

MODEL# _____ SERIAL# _____



Battery Waste Disposal Method:

International, National, and State laws prohibit the improper disposal of all lead acid batteries. The battery end users (owners) are responsible for their batteries from the date of purchase through their ultimate disposal. The only legally acceptable method of disposal of lead acid batteries is to recycle them at an approved secondary lead smelter. Escalera batteries are chemically identical to common automotive starter batteries and can be recycled with automotive lead acid batteries. Contact your local battery recycle center for more details.



THIS PRODUCT CAN EXPOSE YOU TO CHEMICALS WHICH ARE KNOWN TO THE STATE OF CALIFORNIA TO CAUSE BIRTH DEFECTS AND OTHER REPRODUCTIVE HARM AND/OR CANCER. FOR MORE INFORMATION, VISIT - WWW.P65WARNINGS.CA.GOV

Contents

Congratulations! You have chosen an outstanding, carefully engineered and thoroughly tested hand truck. This manual contains essential information you will need in order to successfully operate your Escalera StairCAT®. This unit will provide many years of profitable, trouble-free service if the following instructions are observed. Familiarize yourself with the proper operation and care of your StairCAT® by reading this manual before use.

This manual contains the following sections:

Unpacking & Setup	3
This section covers removing your Escalera StairCAT® from the packaging and initial setup.	
Operation & Safety	4
This section contains information on operating your Escalera hand truck safely and correctly.	
Battery Installation and Charging Instructions.....	4
Stair Climbing Operation.....	5
Auto-rewinding Safety Straps.....	5
Up-stairs Operation.....	6
Down-stairs Operation.....	6
Forklift Operation.....	7
Using the Hand Operated Winch.....	7
Using the Battery-Powered Winch.....	7
Removable Lift-Frame Option.....	8
Maintenance & Lubrication	11
Information on keeping your Escalera hand truck in top working condition.	
Pre-Use Checklist.....	12
6 Month Preventative Maintenance.....	13
Nylon Bushing Lubrication.....	14
Adjusting Lifting Chains.....	15
Trouble-shooting Guide	16
If trouble strikes, look here for the answers to your problems.	
Parts & Service	17
This is a list of common replacement parts and kits.	

Unpacking & Setup

For hand trucks in cartons

1. Carefully open the carton and remove your StairCAT®.
2. Locate the white box containing the battery charger and set it aside.
3. Clip the plastic tie holding the battery secure to the side frame.
4. Center the battery on the lower cross-member and secure it with the rubber tie-down straps to the battery mount bars. (Fig. 3.1)
5. Fully charge the battery before first use (see instructions below).

For hand trucks on pallets

1. Carefully cut away and remove the plastic shrink wrap from the product.
2. Carefully cut and remove the straps that are securing the product to the pallet.
3. Carefully remove the product from the pallet.
4. Locate the white box containing the battery charger and set it aside.
5. Clip the plastic tie holding the battery secure to the side frame.
6. Center the battery on the lower cross-member and secure it with the rubber tie-down straps to the battery mount bars. (Fig. 3.1)
7. Fully charge the battery before first use (see instructions below).

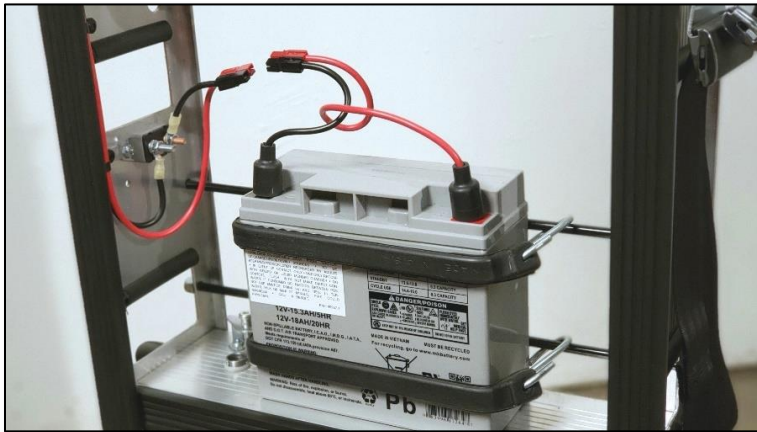


FIG. 3.1 – BATTERY INSTALLED ON LOWER CROSS-MEMBER

Operation & Safety

Battery Installation & Charging Instructions

Before you can begin operating your new Escalera StairCAT® hand truck, you must first install the battery (for all units with power options).



CAUTION

- Always disconnect and remove the battery from your Escalera hand truck when transporting in a vehicle.
- To prevent accidental arcing of the battery, which could result in electric shock or fire, the black rubber battery terminal boots must completely cover the battery terminals at all times when not charging.

1. Mount the battery to the hand truck by placing it on the lower cross-member located directly above the stair climbing gearbox. Stretch the rubber cords around the battery and attach the



FIG. 4.1 – BATTERY HARNESS QUICK CONNECTORS

hooks to the battery bars to hold the battery in place. (Fig. 3.1)

2. To charge the battery, verify the battery is disconnected from the StairCAT® wiring harness at the RED/BLACK quick connectors. (Fig. 4.1)

3. Connect POSITIVE (RED) charger clip to POSITIVE (+) post of the battery.

4. Connect NEGATIVE (BLACK) charger clip to NEGATIVE (-) battery post of the battery.

5. Plug in the charger to a grounded AC wall plug. The green POWER LED will light when AC

power is present to the charger. The charging indicator lights will show the charging cycles and indicate when the battery reaches a full charge. For more detailed charging instructions, consult the battery charger instructions booklet included with your charger.

6. Always fully charge your battery after each use.
7. An overnight charge is usually sufficient to fully charge your battery.
8. Always replace the rubber battery terminal boots over the battery posts when finished charging.
9. Deeply discharging your battery will shorten its life. DO NOT completely discharge your battery before re-charging.
10. When you are not using your hand truck for extended periods of time, DO NOT store the battery in a discharged state. If the battery has been discharged for some time, it may not readily take a charge. You may need to charge the battery 24 to 48 hours for it to eventually accept a charge.
11. Avoid placing your battery in extreme temperatures. The longest service life is attained when the battery is used in an ambient temperature of between 68°F (20°C) and 77°F (25°C)
12. NEVER operate your hand truck with a deeply discharged or worn-out battery. Operating your StairCAT® with a low voltage battery can cause damage to the unit.

13. To test if your battery has worn out, first try charging for 24 to 48 hours. A voltmeter with a load test switch can be used to test the battery.
14. With a new, fully charged battery, under normal conditions, your hand truck should be able to climb up and back down approximately 15 flights of steps (150+ steps).

Stair Climbing Operation (for powered stair climbing units)



CAUTION

- Do not expect to operate your StairCAT® unit with ease the first time you use it. Practice with the hand truck empty until you become familiar with its operation and “get the feel” before attempting heavy loads. Following these simple instructions will assure safe and correct operation of your Escalera StairCAT® stair climbing hand truck.
- NEVER allow unauthorized persons on the stairway or below the hand truck while in operation.
- DO NOT attempt to move people on the hand truck.
- NEVER attempt to climb stairs with a load that is not securely strapped to the hand truck.
- Make sure the stairway is clear of debris or obstructions before beginning to climb with your StairCAT®.
- Always wear closed-toed work shoes or boots when operating your StairCAT®.
- NEVER leave the hand truck unattended or unsecured when not in use.
- DO NOT allow inexperienced persons to operate the hand truck.
- DO NOT exceed the rated maximum capacity of the hand truck.
- DO NOT attempt to move more weight than you can manage safely.
- Do not attempt to alter or modify the hand truck. Doing so will void your warranty and may result in injury or death.
- DO NOT operate your StairCAT® while under the influence of drugs or alcohol.
- ALWAYS FOLLOW the recommended Pre-Use Checklist described in the Maintenance & Lubrication section of this manual before each use.

Auto-rewinding Safety Straps

Always strap the load securely to the hand truck. Each hand truck from Escalera comes equipped with one auto-rewinding safety strap. Additional straps can be added at the factory or shipped as a self-install kit.

1. To secure the load with the auto-rewinding safety strap, draw out the female strap and wrap it around the load, buckling it with the male strap. Leave enough length in the male strap to allow you to pull it tight. (Fig. 6.1)
2. Lock the rewind mechanism by pushing down on the rewind lock pin. (Fig. 6.2)
3. Pull the end of the male strap tightly to secure the load.
4. When ready to release, press the RED button on the female buckle.



FIG. 6.1 – TIGHTENING THE SAFETY STRAP



FIG. 6.2 – REWIND LOCK PIN

To 'break back' the load, place your heel on the floor with the ball of your foot on the hand truck tire. Quickly snap the load back to a balanced position.



QUICK TIP: If you have a StairCAT® Forklift you can adjust the center-of-gravity by raising the height of the load. This can help achieve a more comfortable angle of balance for short, heavy loads. DO NOT raise a load too high, making it too top-heavy to manage safely.

Up-stairs Operation

1. Roll the hand truck firmly to the edge of the stair tread. With the StairCAT® tilted and load balanced, BOTH glide belts must be against the edge of the step before activating the switch.
2. Activate the switch in the UP direction to bring the lifting feet around to the top of the step to be climbed.
3. Stop the lifting feet just as they make contact with the step by releasing the switch.

NOTE: A change in the center of gravity will occur when the load shifts from the dolly wheels to the lifting feet.

4. With the lifting feet just making contact on the top of the step (Fig. 6.3), transfer the weight from the hand truck's wheels to the lifting feet by tilting the hand truck handles toward you carefully.



FIG. 6.3 - LIFTING FEET PLACED ON STEP

5. With the weight of the load now on the lifting feet, activate the switch in the UP direction while you maintain the balance point.
6. At the top of the step, the load will shift back to the wheels. DO NOT allow the hand truck to roll back down the step.
7. Repeat this process for each step to be climbed.

Down-stairs Operation

1. Roll dolly wheels about 4 inches from the stair edge. (This is the same position the dolly wheels are set down on the step when climbing up).
2. Activate the switch to go DOWN and the lifting feet will lift the dolly wheels up and over the step edge and start down the stairs.
3. When the wheels reach the lower step, release the switch to de-activate the stair climbing mechanism. DO NOT allow the hand truck to roll down the next step.
4. Repeat the process for each step.

NOTE: With practice, smooth operation of the hand truck will become second-nature.

Forklift Operation (for forklift units)



CAUTION

- *DO NOT use lift to raise people.*
- *NEVER allow anyone under the forks or load.*
- *NEVER transport your load with the forks lifted high. ALWAYS lower the load to a safe height for transport as soon as possible.*
- *ALWAYS inspect the cable before each use to make sure it is not damaged. Replace the cable if it is frayed or kinked.*
- *For units with a removable lift-frame, ensure the lift-frame is properly attached at the toe plate and the turnbuckles are securely fastened before using the lift.*
- *NEVER leave a weight hanging by the winch while the lift is unattended.*
- *When transporting your lift lying down, secure the forks to the legs using a tie-down strap to prevent the forks from rolling uncontrolled in the channel during transport. Failure to do so may result in damage or injury.*
- *DO NOT exceed the rated maximum capacity of the lift.*
- *DO NOT attempt to move more weight than you can manage safely.*
- *DO NOT attempt to alter or modify the lift. Doing so will void your warranty and may result in injury or death.*

Using the Hand Operated Winch

1. Fully extend the folding handle when either raising or lowering the forks.
2. Ensure your load is safely positioned all the way back on the forks.
3. Rotating the winch handle in the clockwise direction will raise the forks.
4. Releasing the handle will engage the automatic brake.
5. Rotating the winch handle in the counterclockwise direction will lower the forks.

Using the Battery-Powered Winch

1. Make sure the battery is fully charged.
2. For units with a removable lift frame, make sure the winch motor is plugged into the main wiring harness. (Fig. 8.1)
3. Ensure your load is safely positioned all the way back on the forks.

4. Activating the winch switch (Fig. 8.2) in the UP direction will raise the forks.
5. Releasing the winch switch will engage the automatic dynamic brake.
6. Activating the winch switch in the DOWN direction will lower the forks.



FIG. 8.1 ELECTRIC WINCH QUICK-CONNECTOR FOR REMOVABLE LIFT FRAME



FIG. 8.2 ELECTRIC WINCH SWITCH

Removable Lift-frame Option

If you have a StairCat® Forklift equipped with the Removable Lift Attachment, your StairCat® can be used with or without the lifting frame. This allows you to use the StairCAT® as a forklift or a hand truck.



FIG. 8.3 – REMOVABLE LIFT FRAME ATTACHED



FIG. 8.4 – REMOVABLE LIFT FRAME REMOVED

Removing the Removable Lift-frame

1. Lower the forks all the way down.
2. For hand winch units, fold the winch handle inside the frame. (Fig. 9.1)
3. For battery powered winch units, disconnect the winch motor from the main wiring harness by pulling apart the quick connector. (Fig. 8.1).
4. Loosen the turnbuckles located just below the top handles and unhook the hooks from the tie-down rod of the hand truck. (Fig. 9.3)
5. Carefully lift the removable lift-frame off the hand truck toe plate and set aside.

Attaching the Removable Lift-frame

1. For hand winch units, fold the winch handle inside the frame. (Fig. 9.1)
2. Carefully place the removable lift-frame on to the toe plate of the hand truck. Make sure the toe hooks located at the bottom of the lift-frame are properly secured over the back of the toe plate as shown. (Fig. 9.2)
3. Secure the lift-frame to the hand truck by affixing and tightening both turnbuckles as shown. (Fig. 9.3)
4. For battery powered winch units, plug in the winch motor to the main wiring harness. (Fig. 8.1)



FIG. 9.1 – HAND WINCH HANDLE FOLDED INTO FRAME



FIG. 9.2 – LIFT FRAME TOE HOOK SECURED OVER TOE PLATE



FIG. 9.3 – TURNBUCKLE SECURING LIFT FRAME



QUICK TIP: For lifts without the stair climbing mechanism, set the foot brake before sliding a load onto the forks. (Fig. 10.1) For stair climbing units, bring the lifting feet around to make contact with the ground to act as a parking brake. (Fig. 10.2) This will prevent the StairCAT® from rolling away from the operator or tipping while being loaded or standing unattended.



FIG. 10.1 – FOOT BRAKE ON NON-STAIRCLIMBING UNITS



FIG. 10.2 – LIFTING FEET USED AS A PARKING BRAKE

Maintenance & Lubrication

Your Escalera StairCAT® hand truck comes pre-lubed for immediate operation. Regularly scheduled inspection and maintenance should occur every six months or sooner as conditions require. Frequent, light lubrication is required for best performance and will extend the life of moving parts.



CAUTION

- *ALWAYS disconnect and remove the battery from your Escalera™ StairCAT® before attempting any repair.*
- *Never allow lubricating oil or grease to be applied to the drive v-belt, as the belt will slip in this condition. Never attempt to operate your StairCAT® with a slipping belt.*
- *Keep fingers clear of moving gears and chains when making repairs.*
- *Only use genuine factory replacement parts.*
- *ALWAYS FOLLOW the recommended Pre-Use Checklist before each use.*

Use a **multi-purpose spray lubricant** to lubricate the following:

- Lift Chains and Lift Cam Fastener Links
- Drive Chains
- Idler Sprocket Nylon Bushings
- Final Drive Shaft Nylon Bushings

Use a **standard moly grease** to lubricate the following:

- Spur Gear (grease will distribute through the drive train when activated)
- Cable Pulley Shafts (forklift units only)
- Fork Roller Shafts (forklift units only)
- Lift Frame Channel (forklift units only)



QUICK TIPS:

- Keep the battery fully charged when not in use to extend its life.
- Keep your wheels, lifting feet, glide belts and lifting chains clean to prevent tracking dirt or grease when moving equipment over deep carpet or rugs.

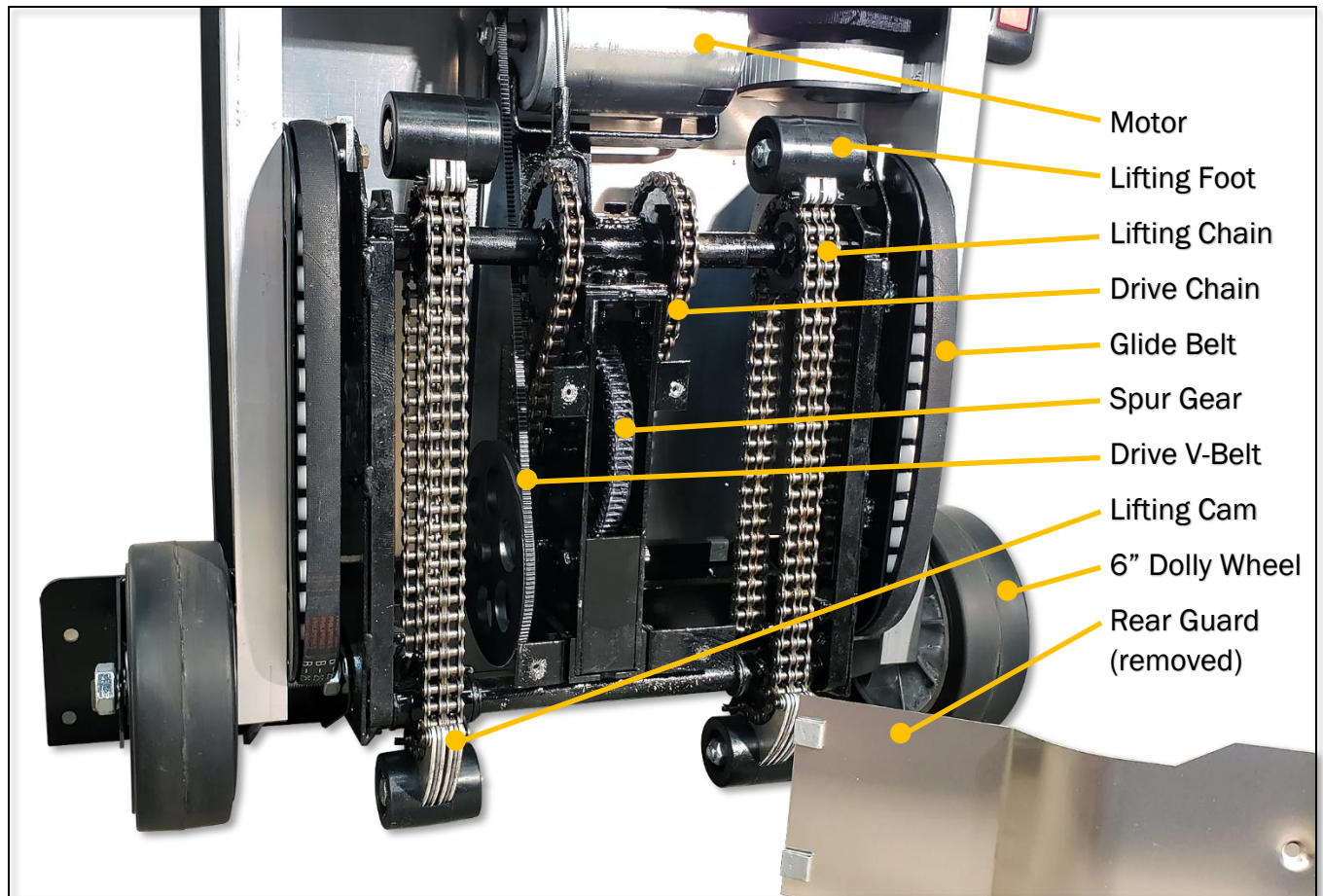


FIG. 12.1 – GEAR BOX COMMON SERVICE POINTS

Before Each Use – Pre-Use Checklist

Escalera recommends you complete the following checklist before each use to ensure safe operation and best performance from your StairCAT®.

ALL UNITS:

1. Be sure your battery is fully charged and is free from damage.
2. Inspect the auto-rewinding safety straps and verify they are in good working condition. Replace if necessary.
3. Inspect the drive v-belt going from the motor pulley to the large nylon gearbox pulley. V-belt tension is pre-set at the factory. To adjust the tension on the v-belt, turn the v-belt tensioner adjustment nut. Full compression of the tension spring will be required at full capacity. (Fig. 13.1)
4. Inspect the lifting chains and lifting cams. If necessary, clean, lube and adjust tension as described below. (Fig. 15.1)
5. Inspect lifting feet for excessive wear. Replace if necessary.
6. Inspect the glide-belts for excessive wear. Replace if necessary.

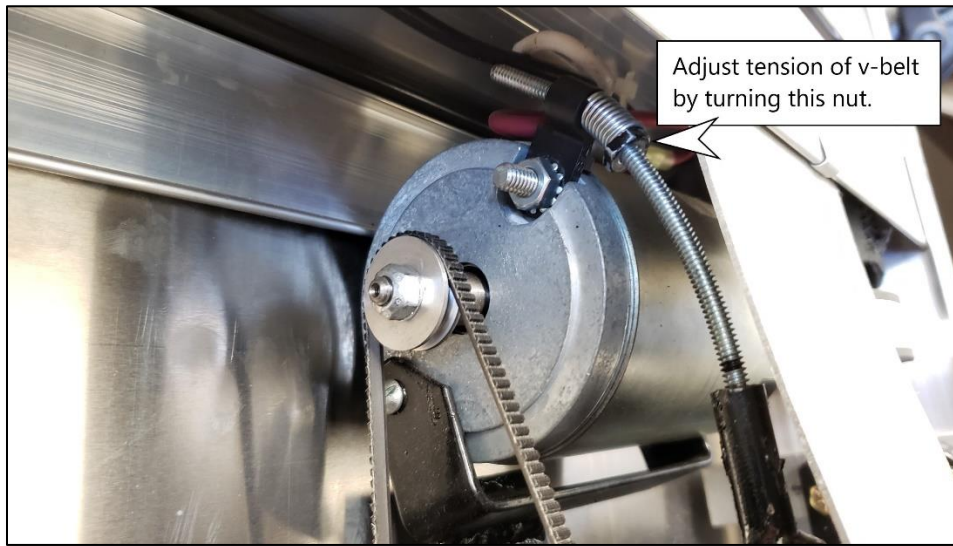


FIG. 13.1 – DRIVE V-BELT TENSION ADJUSTMENT NUT

FORKLIFT UNITS only:

1. Always inspect the cable before each use. Replace the cable if it is frayed or kinked. If the cable is damaged, it can break and act like a whip and inflict injury to anyone within its path.
2. Test the winch for smooth operation.
3. Test for smooth travel of the forks all the way UP and DOWN before using the lift.

Every 6 Months – Preventative Maintenance Checklist

Escalera recommends completing the following maintenance every six months, or sooner as conditions require for safe operation and best performance from your StairCAT®.

ALL UNITS:

1. Remove the aluminum rear guard to expose the large spur gear. (Fig. 12.1) Apply a small amount of moly grease to the large spur gear. Make sure the gearbox is clear of any obstructions, and then activate the switch to spread the grease to the gears of the drive train.
2. Spray a small amount of lubricant on the idler sprocket nylon bushings and final drive shaft nylon bushings. Be sure to lubricate the bushings on both the left and right side. (Fig. 14.2, 14.3)
3. Inspect wiring harness for pinched wires or loose connections. Make repairs or replace as necessary.
4. Inspect all frame fasteners and tighten if necessary.
5. Inspect the 6" dolly wheels for excessive wear. If the rubber is worn or separated from either wheel, replace both wheels.
6. Check to make sure the bolts holding the lifting feet are tight. As the lifting feet wear, they can be rotated 180 degrees for longer life.

FORKLIFT UNITS only:

1. Inspect uni-strut forklift channel for debris and wear. Clean and lightly grease the channel as necessary for smooth UP and DOWN travel of the forks.
2. Inspect fork rollers and roller shafts for wear. Lube and/or replace as necessary.
3. For hand operated winch, inspect friction disc for damage or wear. Replace if damaged or less than 1/8th inch thick. (Fig. 14.1)
4. Lube cable pulley shafts as necessary.
5. Check all wheels and swivel casters for excessive wear and replace as necessary for smooth operation.

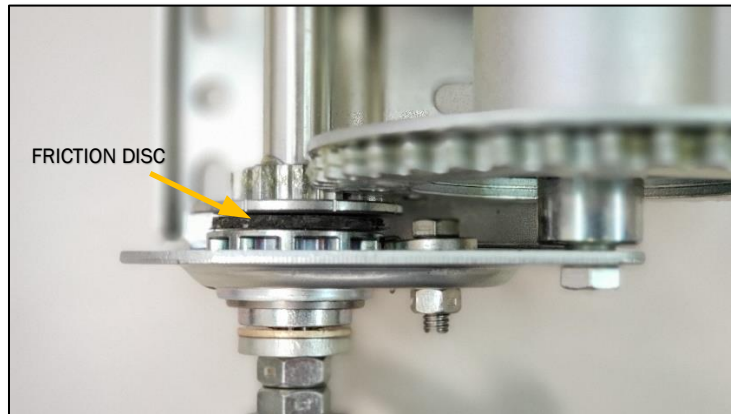


FIG. 14.1 – HAND WINCH FRICTION DISC

Nylon Bushing Lubrication

Your StairCAT® comes lubricated from the factory for immediate use. Follow the recommended schedule to re-apply lubricant. Apply a small amount of multi-purpose spray lubricant to the nylon bushings found on each end of the drive shaft (Fig. 14.2) and idler sprockets. (Fig. 14.3) Be sure to lubricate both bushings for each idler sprocket. Also, lubricate the bushings at both the left and right end of the drive shaft.

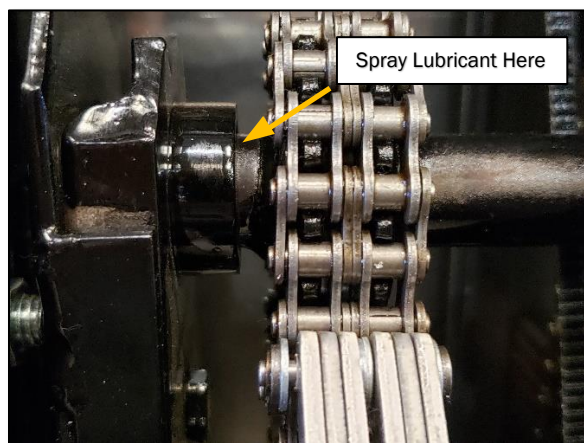


FIG. 14.2 – DRIVE SHAFT BUSHING LOCATION
(LEFT SIDE)

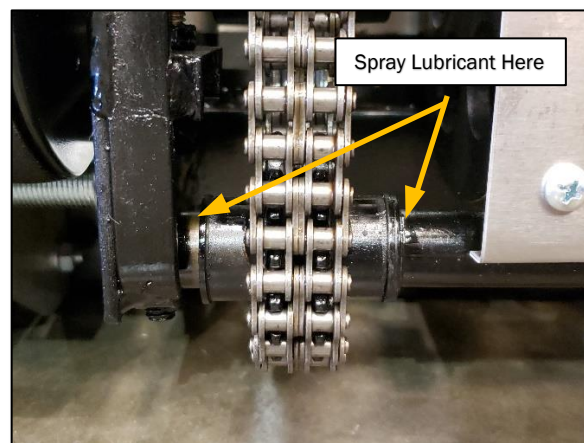


FIG. 14.3 – IDLER SPROCKET BUSHING LOCATION
(LEFT SIDE)

Adjusting Lifting Chains (all stair climbing units)



QUICK TIP: Removing the gearbox from the StairCAT® will make it easier to adjust the lifting chains. Using a 15/16" end wrench, remove the axle bolts by first backing off the axle bolt jam nuts. Then use a 7/16" end wrench to remove the 4 bolts securing the top of the steel side plates of the gear box. The stair climbing gear box will then remove as one complete assembly.

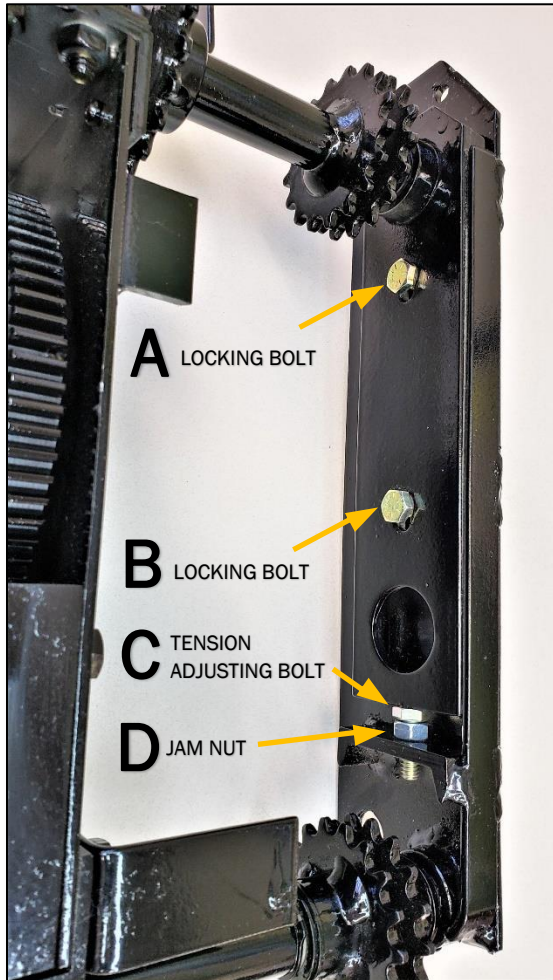


FIG. 15.1 – LIFTING CHAIN ADJUSTING CHANNEL

*Note: Chain has been removed for image purposes.
Adjustment must be made with Lift Chain installed.*

1. Loosen (do not remove) the Chain Adjusting Channel Locking Bolts (A & B) using a 7/16" end wrench.

NOTE: Older 700 lb capacity units may have only one locking bolt per side.

2. Loosen the Jam Nut (D) then adjust the Lift Chain tension by turning the Tension Adjusting Bolt (C). The Lift Chain should be adjusted to no more than .25" infection.
3. Once you have set the tension on the Lift Chain, tighten down the Jam Nut (D) to secure the Tension Adjusting Bolt.
4. Tighten the Chain Adjusting Channel Locking Bolts (A & B) to secure the Chain Adjusting Channel.
5. Repeat this process for both the left and right side Lift Chains making sure the tension is the same on both sides.
6. Regularly check the operation of your StairCat® and re-adjust when necessary.



QUICK TIP: Contact Escalera if you have any questions regarding your repair. If any repair is beyond your skill level, factory service is available.

Trouble-shooting Guide



PROBLEM	POSSIBLE CAUSE	POSSIBLE SOLUTION
No power when switch is activated	Loose ground in switch box	Tighten ground wire located in switch box to the side frame
	Corroded or loose battery terminals	Clean and/or replace terminals
	Tripped circuit breaker did not reset	Check by bypassing breaker and replace if necessary
Motor runs but StairCAT® will not climb	Loose drive v-belt	Tighten drive v-belt – see Maintenance section for instructions
StairCAT® is running very slow	Battery faulty or not fully charged	Check battery using a voltmeter – Battery should hold a minimum of 10 volts while under load – Replace if necessary
	Faulty battery charger not recharging the battery	Check charger output while it is connected to the battery - The battery voltage should increase over time as the charger is connected
	Bad switch causing resistance	Replace switch
	Worn out motor	Repair or replace motor
StairCAT® runs full speed for a few steps - then slows down	Faulty battery	Check battery using a voltmeter – Battery should hold a minimum of 10 volts while under load – Replace if necessary
Short Battery Life	Battery not kept fully charged when not in use - deep cycling shortens life	Keep battery charged
Lifting cams keep breaking	Lift chains too loose	Keep lift chains tight - See maintenance section for tightening instructions







Common Repair Parts

Escalera recommends using only genuine factory-direct replacement parts. We keep all parts in stock for same day shipping. For a complete list of parts available, contact Escalera.



QUICK TIP: Keeping a few repair parts on hand is a good idea to prevent any potential down time.

Part#	Description	
0500HD	UP/DOWN Switch	
0536	Circuit Breaker	
0534	Dual Circuit Breaker - for electric winch	
0013HD	Rewind Mechanism for Safety Strap	
0025	Safety Strap - Female	
0590	Drive V-belt	

Part#	Description	
0660HD	Lifting Feet - 700 lb cap. (set of 4, with hardware)	
0715HD	Lifting Feet - 1200 lb cap. (set of 4, with hardware)	
0006	Glide Belt Assembly	
0012	Rewind Lock	
0026	Safety Strap - Male	
0009	6" Wheel with bearings	

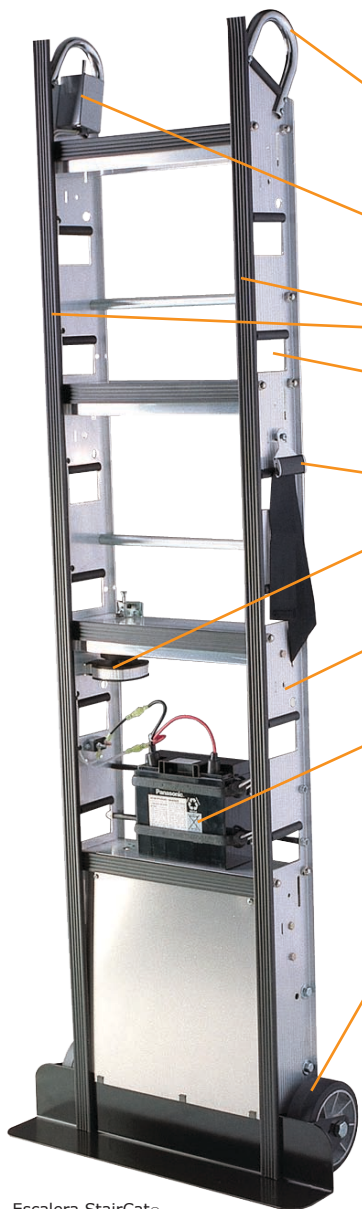
0564HD	Motor		0278	Plain Bore Wheel with retaining ring	
0627	Chain Repair Kit – 700 lb capacity		0430	Swivel Cater with hardware	
0727	Chain Repair Kit – 1200 lb capacity		0407	Standard Winch Cable	
0455	Ratchet Kit – for Hand Winch		0458	Friction Disc – for Hand Winch	



ESCALERA, INC.



Manufacturers of the World's Finest Stair Climbing Hand Trucks



Escalera StairCat®
Model: MS-1-72

Making Light Work Of Heavy Loads

Modular design allows any part to be replaced by the operator in the field.

Ergonomic, plated handles, angled for easier load handling. Magnum Handle upgrades available.

Single control, **easy to operate "UP-DOWN" switch.**

Sculptured, long-lasting, non-marking vinyl padding.

Ergonomic placement of **multiple hand holds** give you a place to hold where you need it.

Fastest, easiest to use, automatic rewinding safety strap available. **Upper and lower straps optional.**

Frame made of tough tempered aluminum alloy. **Stronger than magnesium - lighter than steel!**

Non-spillable, sealed, rechargeable battery. Optional high-capacity battery available. Charger included.

Non marking wheels and lifting feet protect all step and floor surfaces.



POWERED STAIR CLIMBER

New high-efficiency motor capable of **the most lifts per charge of any powered stair climbing hand truck.** Serviceable drive train, built for decades of service.

SPECIFICATIONS

	MS-60	MS-66	MS-72	MS-1-66	MS-1-72
Capacity	700 lb	700 lb	700 lb	1200 lb	1200 lb
Overall Height	58"	64"	71.5"	64"	71.5"
Width	24"	24"	24"	24"	24"
Depth (Std. Toeplate)	10.5"	10.5"	10.5"	10.5"	10.5"
Max. # of Straps	3	3	4	3	4
Weight	75 lb	77 lb	80 lb	81 lb	83 lb

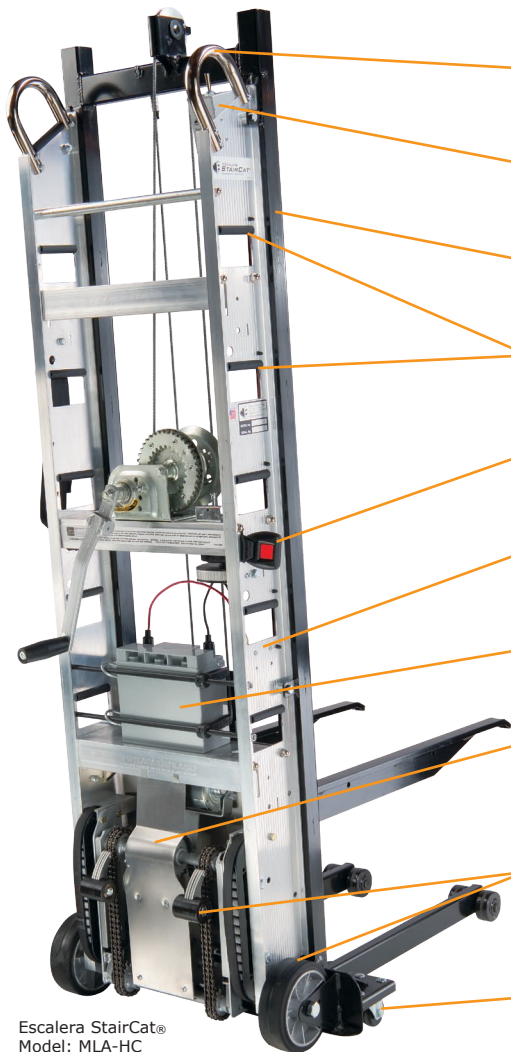




ESCALERA, INC.



Manufacturers of the World's Finest Stair Climbing Hand Trucks



Escalera StairCat®
Model: MLA-HC

Making Light Work of Heavy Loads

- Ergonomic, plated handles, angled for easier load handling. Magnum Handle upgrades available.
- Single control, **easy to operate "UP-DOWN" switch.**
- Steel lift frame - 1200 lb capacity - 54 inch lift height - 28.25 inch forks
- Ergonomic placement of **multiple hand holds** give you a place to hold where you need it.
- Fastest, easiest to use, automatic rewinding safety strap available. **Upper and lower straps optional.**
- Frame made of tough tempered aluminum alloy. **Stronger than magnesium - lighter than steel!**
- Non-spillable, sealed, rechargeable battery. Optional high-capacity battery available. Charger included.
- Extraordinary gear box operated with maximum efficiency. Durable, serviceable, and built for years of service.
- Non-marking** lifting feet and 6 inch wheels with sealed ball bearings protect all step and floor surfaces for years of trouble-free use.
- Swivel casters provide maximum maneuverability in tight quarters.

RLA Lifts feature a removable lift attachment for maximum versatility. Use your handtruck as a stair climbing lift, or a stair climbing dolly!

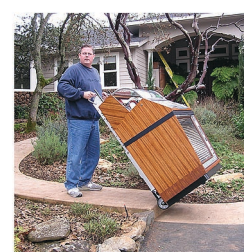


Model: RLA-HC with lift attachment removed



SPECIFICATIONS

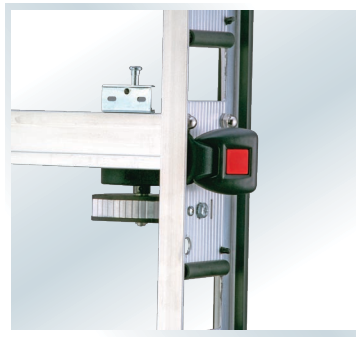
Model	Description	Winch	Capacity	Height	Width	Depth	Weight
MLA-HC	Stair Climbing Forklift	Manual	1200 lb	68"	24.5"	38.25"	168 lb
MLA-EW	Stair Climbing Forklift	Electric	1200 lb	68"	24.5"	38.25"	184 lb
RLA-HC	Stair Climbing Forklift w/ Removable Lift Attachment	Manual	1200 lb	68"	24"	38.25"	181 lb
RLA-EW	Stair Climbing Forklift w/ Removable Lift Attachment	Electric	1200 lb	68"	24"	38.25"	198 lb
QLA-HC	Stair Gliding Forklift	Manual	1200 lb	68"	24.5"	38.25"	128 lb
QLA-EW	Stair Gliding Forklift	Electric	1200 lb	68"	24.5"	38.25"	158 lb





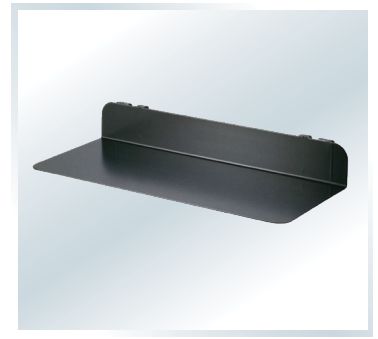
Big Wheel Attachment

BWA-1: Removable pneumatic 10" tires for rolling on rough terrain. Easily snaps on/off hand truck in 2 seconds.



Auto-Rewind Safety Strap

RW-1: 12 ft. long nylon automatic rewinding safety strap. Upper, middle and lower positions available for maximum versatility.



Big Toeplate Attachment

BTA-12-28 / BTA-12-32: Large removable toeplate fits over standard toeplate. Available in 2 sizes; 12" x 28" and 12" x 32"



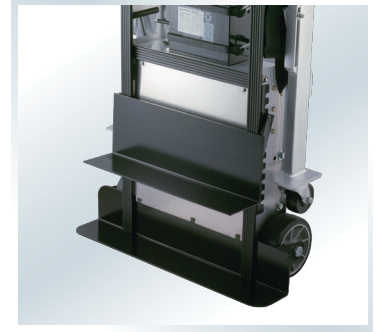
Retractable Load Support

RLS-1: Wide track folding carriage legs with swivel casters. Foot-operated latch allows for easy deployment without uprighting load.



Barrel Attachment

BAR-1 / BAR-2: Concave, padded brace stabilizes cylinder-shaped loads. Used for water-heaters, barrels and drums.



Height Adjustable Toeplate

HAT-1: For moving loads with legs, such as furniture and snack vending machines.



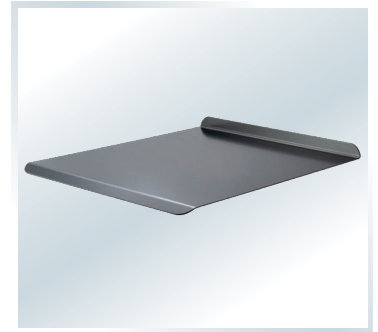
Swivel Caster Attachment

SCA-1: Attaches easily to the back of the hand truck near the top handles. Allows the hand truck to lay flat and roll in a horizontal position.



Magnum Handle Upgrade

#1305 / #1307: No-slip coated handle with wider opening. Replaces standard chrome top handle. Cross-bar option available (#1307).



Lift Plate Attachment

LPA-1: Removable 24" x 28" steel platform locks on to forks (for fork lift models only).



Portable Steps

Custom designed aluminum steps available in various sizes to fit most delivery vehicles ranging from small pick-ups to large delivery trucks.



Lift Hitch Attachment

LH-3: Carries Escalera Forklifts on the back of delivery vehicles. Fits standard 2" receiver (for fork lift models only).



Escalera CopyCaddy™

RPA-1 / RPA-2: Delivery cart/ramp for copy machines and large electronic equipment. 2 pallet sizes and 10" extensions available. Includes all-terrain tires, and adjustable strap.

Operation and Safety Instructions

Escalera StairCAT® Stair Climbing Hand Trucks and Forklifts



Brought to you by:



732.276.7164