



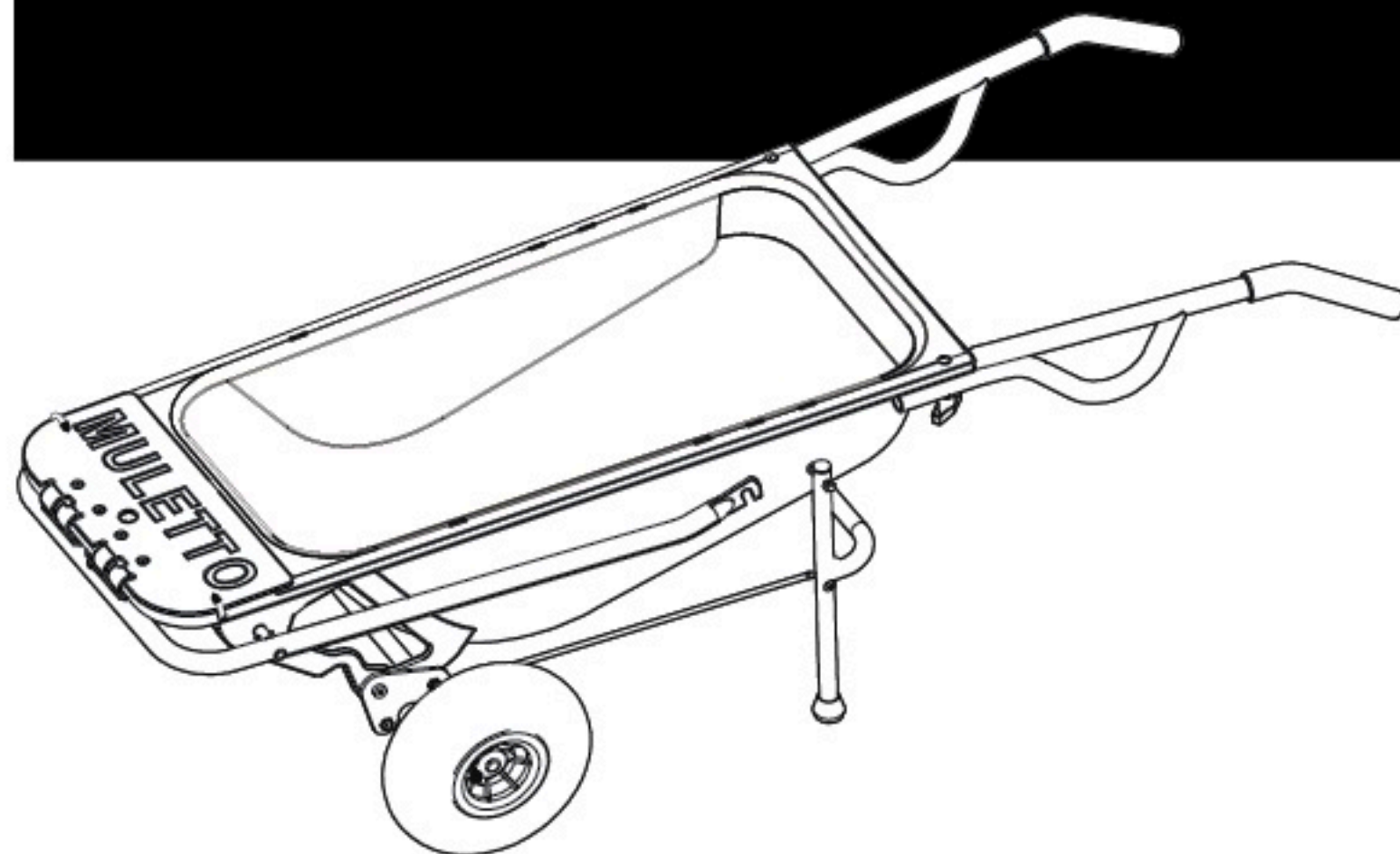
Apurk Ltd. products are guaranteed against defects in material and workmanship, not against wear or misuse.

APURK LTD.

www.themuletto.com

Patented / Registered Trademark / Copyright 2012

Designed by Apurk in Canada - Made in China



Wheelbarrow · Hand Truck · Pot Carrier · Rock Lifter · Bag Holder · Trailer Mover

INSTRUCTION MANUAL

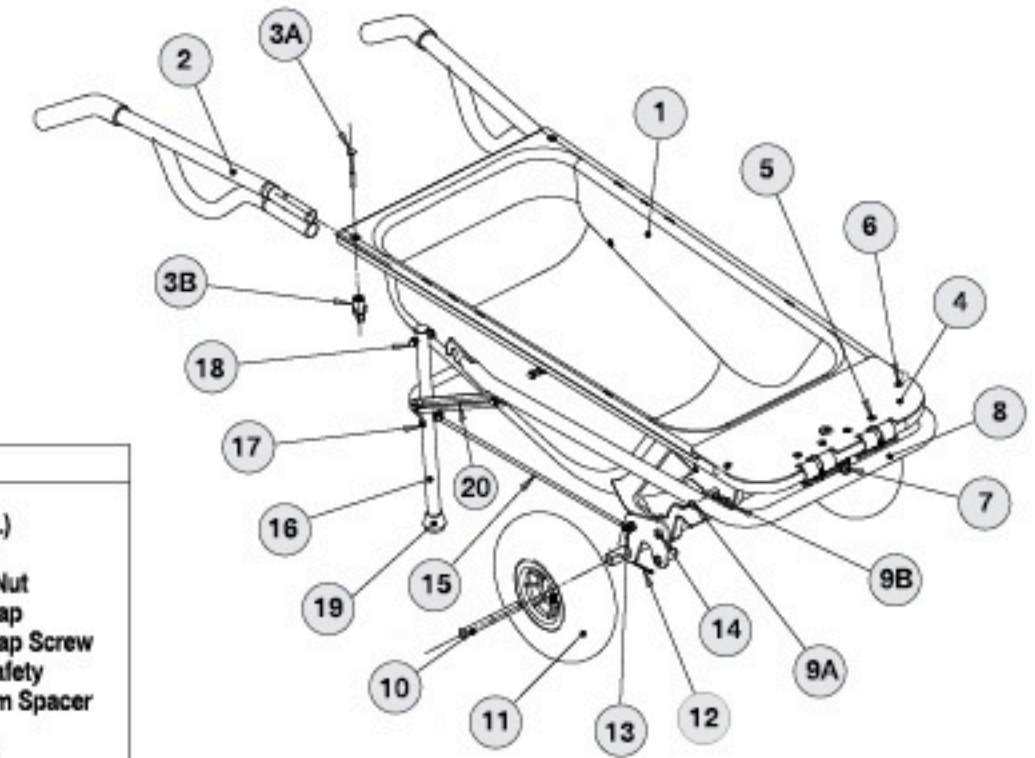
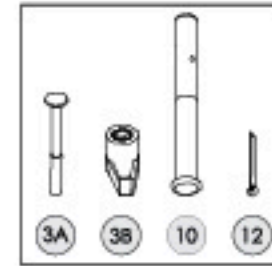
- Product benefits 2
- Parts inventory 3
- Assembly instructions 4
- Operating instructions 5-8
 - Hand truck to wheelbarrow 5
 - Wheelbarrow to hand truck 5
 - Hand truck 5
 - Extended lifting arms 6
 - Extended hand truck 6
 - Rock lifter & mover 7
 - Flower pot carrier 7
 - Cylinder holder 8
 - Bag holder 8
 - Bag holder with cradle support 8
 - Trailer mover 8
- Load capacities 9
- Warranty 10

PRODUCT BENEFITS

- Space saver - virtually eliminates the clutter from storing multiple products
- Compact for transportation
- Easy to use and minimal strain on your back
- Assists in the lifting of heavy objects
- Dual wheels for extra stability
- All steel construction for maximum strength
- Indoor or outdoor use

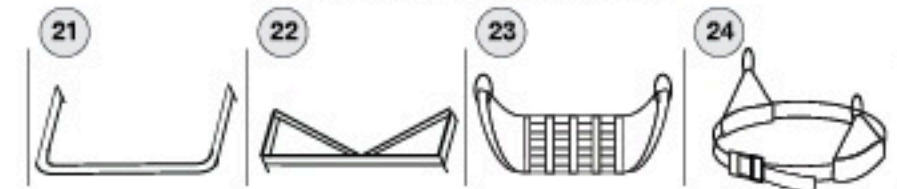
CAUTION Read instructions carefully!
 Never overload the Multifunction Hand Truck or over exceed its maximum capacities for your own safety. Adult supervision is always required when product is being used by children.

The Multifunction Hand Truck was carefully packaged and inspected before it left the warehouse. If you find this product to be damaged in any way after you have purchased it, please contact the retailer immediately. Keep all proof of purchase and original packaging.

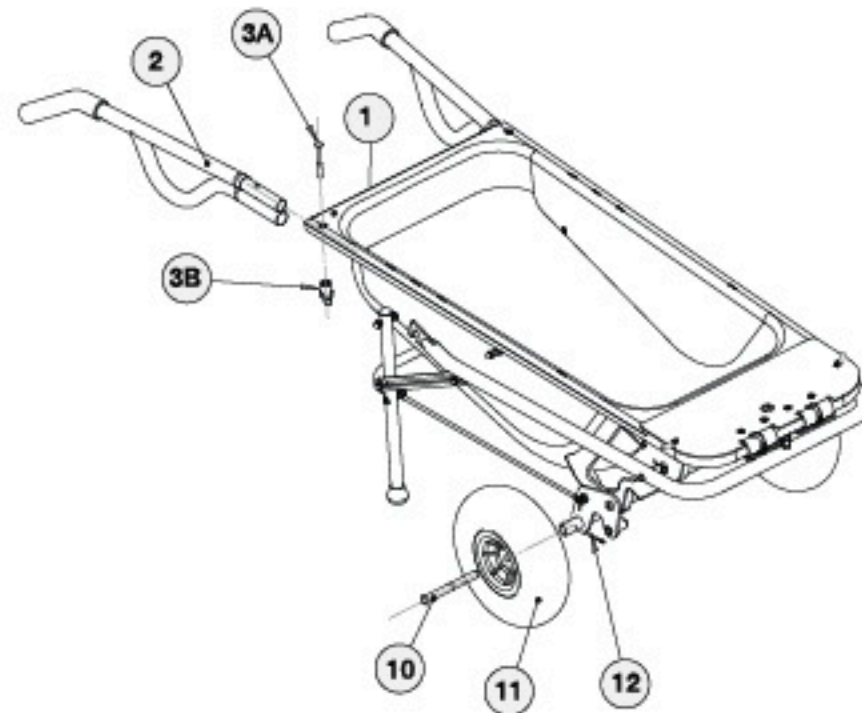
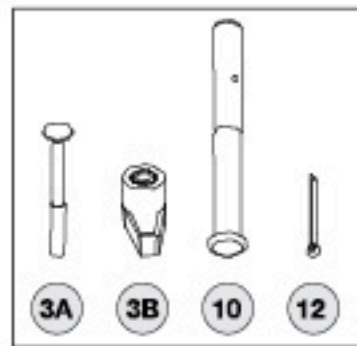


| Ref. No. | Qty. | Part Name |
|----------|------|---------------------------|
| 1 | 1 | Bucket |
| 2 | 2 | Handles (L., R.) |
| 3A | 2 | Handle Screw |
| 3B | 2 | Handle Wing Nut |
| 4 | 1 | Hand Truck Flap |
| 5 | 4 | Hand Truck Flap Screw |
| 6 | 2 | Hand Truck Safety |
| 7 | 1 | Adjustable Arm Spacer |
| 8 | 1 | Pot Arm |
| 9A | 2 | Pot Arm Shaft |
| 9B | 2 | Pot Arm Quick Release Pin |
| 10 | 2 | Wheel Shaft |
| 11 | 2 | Wheel/Tire |
| 12 | 2 | Shaft Pin |
| 13 | 2 | Transition Rod Pin |
| 14 | 2 | Axle Nut |
| 15 | 2 | Transition Rod |
| 16 | 2 | Leg Support |
| 17 | 2 | Leg Support Screw Set 1 |
| 18 | 2 | Leg Support Screw Set 2 |
| 19 | 2 | Leg Support PVC Cover |
| 20 | 1 | Wheelbarrow Safety |
| 21 | 1 | Bag Holder |
| 22 | 1 | Cylinder Add-on |
| 23 | 1 | Mesh |
| 24 | 1 | Strap |

SUPPLIED ACCESSORIES

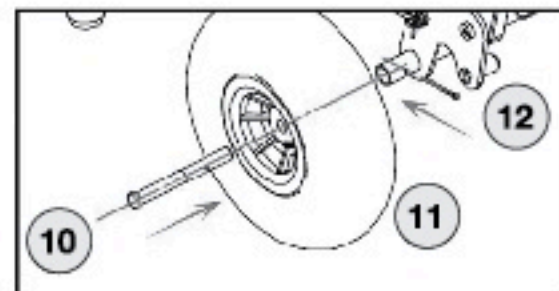


*ACCESSORIES NOT SHOWN TO SCALE



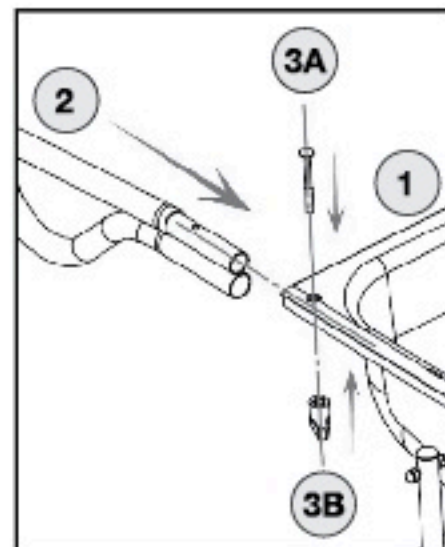
ATTACHING WHEELS

1. Flip the Multifunction hand truck upside down so that the bucket is flat on the floor.
2. Making sure that the air fill nozzle is facing out, insert one shaft (10) through a wheel (11) and slide it into the axle.
3. Align the hole in the axle with the shaft (10) and insert the safety pin (12) to lock it in place. Spread the safety pin apart so it stays in place.
4. Repeat steps 2 and 3 for the opposite side.
5. Inflate tires slowly using a hand pump only.
*Maximum 30psi.



ATTACHING HANDLES

1. Stand the Multifunction hand truck upright into the hand truck position.
2. Insert the handle (2) marked "R" into the right hole of the Multifunction hand truck (1) also marked "R".
3. Insert the bolt (3A) from the front of the Multifunction hand truck and screw on the plastic retaining nut (3B).
4. Repeat Step 2 and 3 for the left handle (2).



The Multifunction hand truck is a revolutionary dual-patented multifunction hand truck. The uses for this product are endless. Review these instructions carefully and make sure that you are familiar with all of the functions and features along with the safety lock before operating.

When used properly, the Multifunction hand truck transforms from a wheelbarrow into a hand truck with ease. Please review these simple steps and practice them to ensure safe operation.

When you first take the product out of its packaging for assembly, it will be in the hand truck position. To change from a hand truck into a wheelbarrow please follow these instructions:

HAND TRUCK TO WHEELBARROW

1. Make sure the Multifunction hand truck is on flat solid ground and in the upright hand truck position. Hold the product with one hand while you disengage the safety arm.
2. While holding the Multifunction hand truck with one hand gently pull back on the wheelbarrow legs with the other. As you pull back gently lower it into the wheelbarrow position.
3. Engage the safety to the lock position.

WHEELBARROW TO HAND TRUCK

1. Disengage the safety from the wheelbarrow lock position.
2. Hold the Multifunction hand truck with both hands on the handles and lift up. Stand the product vertically and the wheels will automatically fold themselves into the hand truck position. If necessary, push the wheelbarrow legs to ensure the wheels are in the proper position.
3. Engage the safety arm in the hand truck lock position.

Fig. 1



Fig. 2

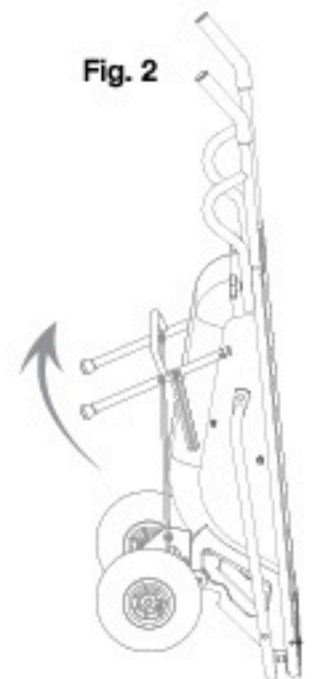
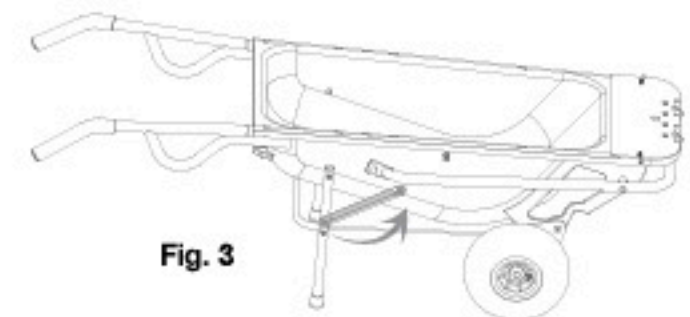


Fig. 3



CAUTION Read instructions carefully! Never overload the Multifunction Hand Truck or over exceed its maximum capacities for your own safety. Adult supervision is always required when product is being used by children.

HAND TRUCK

To release the Dolly Flap, disengage the spring lock by pulling both lock pins outwards(A) and twisting until they rest under the frame (fig. 1). Open the Dolly Flap(B), slide to the side(C) and lock in place (fig. 2). To close the Dolly Flap(B) after use, simply reverse the steps above.

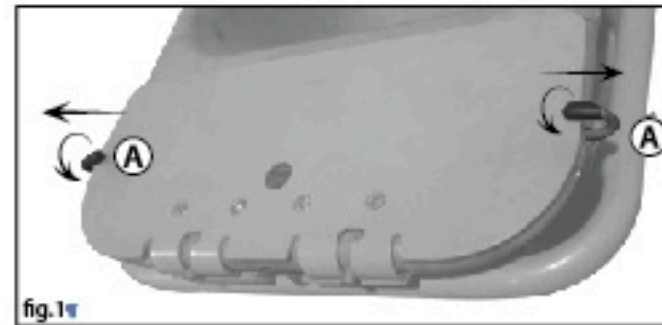


fig.1

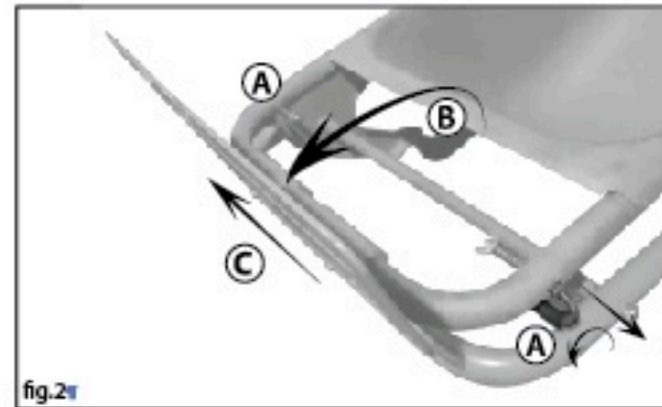


fig.2

Please make sure to carefully follow the instructions and practice transforming from a hand truck into a wheelbarrow and vice versa a few times to make sure the correct technique is employed.

USING THE EXTENDED LIFTING ARMS

The extended lifting arms are a very unique feature and serve multiple purposes. The extended lifting arms can be used as an extended hand truck flap, as a flower pot or rock lifter and mover.

EXTENDED HAND TRUCK

In this position the Multifunction hand truck can hold large items that would normally not fit on the hand truck lip. Simply lower the extended lifting arms into the dolly position. Once fully lowered, items weighing up to 80lbs/36kg*, evenly distributed, can be placed on the arms. (Images shown to the right).

*If arms do not stay in place or are difficult to move adjust the break by tightening or loosening the screw.



ROCK LIFTER AND MOVER

With the addition of this specially designed mesh the Multifunction hand truck is capable of lifting heavy objects that would normally require a lot of effort. Simply follow these few steps to transport objects of up to 80lbs/36kg with ease.

1. Place the mesh next to the desired object. Roll or place the object in the center of the mesh.
2. Make sure the Multifunction hand truck is in the hand truck position. Lower the extended lifting arms into place over the mesh with the object (fig. 1).
3. Holding on with one hand insert the metal O rings on the mesh onto each lifting arm slot (fig. 2).
4. Using both hands press down on the handles to lift the object off the ground. Move the object to the desired location and set the object down (fig. 3). Unhook the metal rings and roll the object off the mesh.

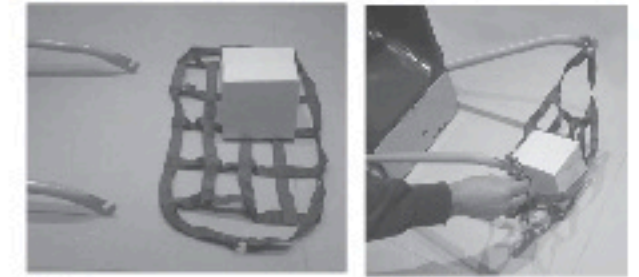


fig. 1

fig. 2



fig. 3

FLOWER POT CARRIER

With the extended lifting arms and the Flower Pot Strap you can lift almost all pots up to 80lbs/36kg. Follow these steps to correctly lift and move flower pots with ease.

Note: the center of gravity or mass (heaviest part) has to be below the line of the flower pot strap. If this is not the case, TWO people MUST assist in moving the flower pot.

1. Wrap the Strap around the pot and tighten the strap. Make sure to place the strap towards the top of the pot so that most of the weight is below the line of the strap (fig. 1 & 2).
2. Ensure the Multifunction hand truck is in the hand truck (upright) position. Lower the extended lifting arms just above the pot (fig. 3)
3. Slide the two connecting loops with metal rings to opposite sides of the pot. Hold the Multifunction hand truck with one hand and use the other hand to attach the metal rings to the extended lifting arms (fig. 3).
4. Using both hands, press down on the handles. Very slowly lift the flower pot off the ground. Note: If the pot is leaning more to one side, lower the pot back down to the ground (fig. 4). Reposition the connecting loops and try again. If the center of gravity is above the strap or the plant is very tall and continues to lean, a second person MUST assist in moving the flower pot.



fig. 1

fig. 2

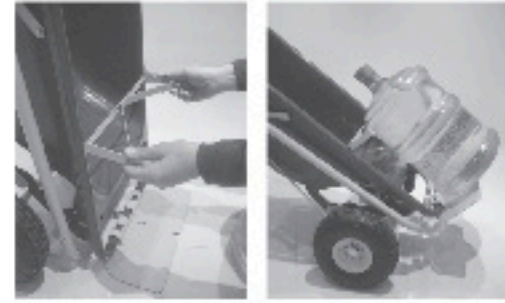


fig. 3

fig. 4

CYLINDER HOLDER

This accessory is great for carrying anything cylindrically shaped in the hand truck position. Simply slide the cylinder holder into the two slots in the rails to proceed with this function. (Images shown to the right).



BAG HOLDER

The bag holder accessory is great for use in the garage to hold garbage bags or out in the yard to hold a yard waste bag for collecting leaves or other debris. Attaching the bag holder is very simple. In the upright hand truck position, insert one side of the bag holder into the slots on the sides of the product. (fig. 1) Once both sides are inserted evenly, slide the bag holder down into place. With the bag holder attachment secured, place a paper or plastic bag onto the holder. For heavy loads, make sure the Multifunction hand truck is standing on solid and flat ground. Also, it is suggested to use the rock mesh and extended lifting arms as a cradle to support the bottom of the bag.



fig. 1



fig. 3

BAG HOLDER WITH CRADLE SUPPORT

For heavy loads, use the rock mesh and extended lifting arms to support and cradle the bottom of the bag.

1. Attach the Bag Holder (fig.1).
2. Lower the extended lifting arms to the ground.
3. Slide on the rock mesh to the extended lifting arms (fig. 2).
4. Attach the bag onto the holder and make sure the bottom of the bag is securely supported with the rock mesh (fig. 3).



fig. 2

TRAILER MOVER

This function allows you to move jet-skis, snowmobiles, or other small trailers with ease. Follow these simple instructions to learn how to move a trailer safely and easily. *Note: The trailer hitch ball is not included. 1 7/8" or 2"

1. Transform the Multifunction hand truck into the dolly position.
2. Unlock and open the hand truck flap. Screw on the hitch ball (fig. 1).
3. Close and lock the hand truck flap (fig. 2).
4. Wheel up to a trailer with the tongue positioned at least 8 inches above the ground. Lifting up on the handles position the ball under the hitch (fig. 3).
5. Press down on the handles so that the tongue of the trailer lifts off the ground. Move the trailer into the desired position with ease.



fig. 1



fig. 2



fig. 3

